

# SEF

Specialised Engineering Products



Iso-Flate®

High performance  
seal solutions



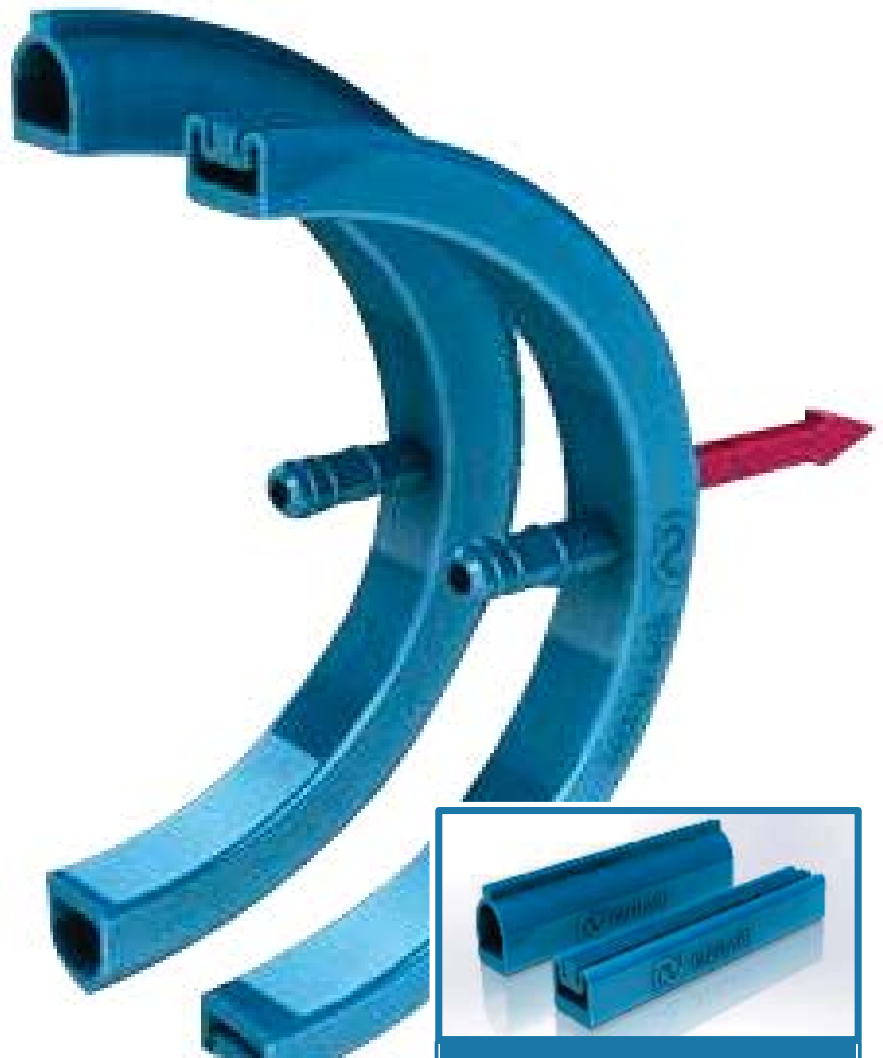
Inflatable seals for the Marine Industry

 **BULTZ**

Juntas hinchables para Embarcaciones



# Inflatable Seals



Inflatable seals



Inflatable seals

The ISO-FLATE® range of inflatable seals are an ideal solution for reliable weather tight and UV/ saltwater resistant sealing. Our team has all the experience, and latest 3D modeling technology available to work with you from the outset, and develop a high end solution using existing or bespoke profiles.

## Product Features

- Precision Spark Eroded Vulcanisation tooling, and strict extrusion tolerance ensures highest quality of vulcanisation
- Over 100 profiles available in FDA silicone, Anti-Microbial Silicone, FDA EPDM, FKM and many other materials
- Precision moulded rubber valves, and machined steel valves to suit vast range of housings adhering to stringent leak rates
- Unique seal identification number providing detailed traceability for each individual seal supplied
- Rapid cycle fatigue testing available providing accurate, application specific cycle life estimates
- High Quality of Vulcanisation in almost any RAL number for aesthetically stunning seal/door combinations

## Guarantees / Accreditations

- ✓ AS9100 accreditation
- ✓ Specific material certification (FDA compliance for eg)
- ✓ Individual seal pressure test certification



Inflatable seals



“

Contact us to talk to our sales engineers or to arrange a site visit to discuss your application or requirement in detail.

”



ISO 9001  
AD 5186  
BUREAU VERITAS  
Certification



Machined seal housings



Containment doors

We can produce an incredible number of different designs , using our wide range of profiles and tooling (including 90 degree corner seals for axial inflation). Below is just a short selection of marine applications we have covered...

### ► Typical Marine Uses

- Transom Hatches
- Forward Hatch Seals for racing
- Patio Doors
- Composite moulding
- Companion way doors
- Vacuum forming
- Tender Doors
- Sun Decks



Bespokedoor and window seals





# Inflatable Seal Profiles

Below is a small selection of available Iso-Flate® profiles. Here at SEP we actively encourage technical interaction between our team and your engineers in order to choose the correct profile, however should you require more detailed information on one of the below profiles specifically, please feel free to request a data sheet.

## Profiles



• SEP53A



• SEP4A



• SEP5A



• SEP7A



• SEP8A



• SEP11A



• SEP14A



• TBC



• SEP8B



• SEP1A

## Specifications

Profile Reference	Width (mm)	Relaxed Height (mm)	Inflated Movement (mm)
SEP53A	17	14	8
SEP4A	16	18	3
SEP5A	35	32	6
SEP7A	20	17.5	4
SEP8A	50	24	18
SEP11A	24	23	12
SEP14A	35	28	20
TBC	TBC	TBC	9
SEP8B	TBC	TBC	28
SEP1A	17	12	6



\*All of the above information is given as a guideline only, for more detailed technical guidance please contact the iso-flate® technical team.



## ▶ Profiles



• SEP47A



• SEP79A



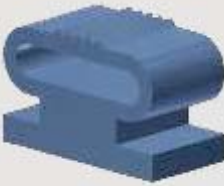
• SEP51A



• SEP23A



• SEP29A



• SEP31A



• SEP37A



• SEP38A



• SEP44A



• SEP46A

## ▶ Specifications

Profile Reference	Width (mm)	Relaxed Height (mm)	Inflated Movement (mm)
SEP47A	18	12	9
SEP79A	17	8	7
SEP51A	25	19	10
SEP23A	20	15	12
SEP29A	20	20	4
SEP31A	30	21	13
SEP37A	34	27	5
SEP38A	24	16	11
SEP44A	26	20	13
SEP46A	20	13	7

Portable rapid cycle testing at SEP or at the clients premises

\*All of the above information is given as a guideline only, for more detailed technical guidance please contact the iso-flate® technical team.

Over 40 years of experience in designing and producing seals for the most demanding applications



Juntas hinchables para Embarcaciones

Más información

[www.bultz.com](http://www.bultz.com)

[contacts@bulz.es](mailto:contacts@bulz.es)

